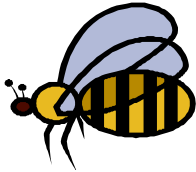


# Lewis, Mangum & Shelton Weekly Newsletter



May 10 – May 14, 2021

**Science:** Mrs. Shelton  
[ashelton@pearlk12.com](mailto:ashelton@pearlk12.com)



**Unit Topic:** Human Body Systems

**Textbook pages** 34-71

**Homework:**  
**Monday-Friday:** None



**Language Arts & Social Studies:** Mrs. Mangum  
[hmangum@pearlk12.com](mailto:hmangum@pearlk12.com)

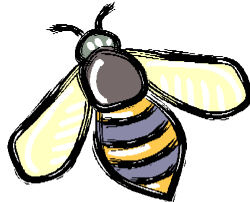


**Unit Topic:** The Little Prince

**We will be finishing the Language Diagnostic this week.**

**Homework:**  
**Monday-Friday:** None

**Math:** Mrs. Lewis  
[cilewis@pearlk12.com](mailto:cilewis@pearlk12.com)



**Topic:** 4.MD.3, 4.MD.4, 4.G.1, and 4.G.2 – Finding Missing Angles and Two-Dimensional Shapes and their Characteristics

**\*\*We are going back to cover 4<sup>th</sup> grade math standards the students missed last year due to COVID.\*\***

**We will be finishing the Math Diagnostic this week.**

**Homework:**  
**Monday-Friday:** None



## **School Nurse Reminders:**

Students SHOULD NOT attend school if they have any of the following:

\*Fever of 100° or greater; chills; nausea/vomiting; diarrhea; severe sore throat/earache/headache; persistent cough; contagious rash; pink eye; or are waiting to hear back from a Covid test.

## **Announcements:**

**\*\*Monday, May 10<sup>th</sup>:** 200 AR Point Club members party

**\*\*Wednesday, May 14<sup>th</sup>:** 5<sup>th</sup> Grade Field Day

**\*\*Friday, May 21<sup>st</sup>:** Awards Day (see back for info)

**9:00 – 9:30 – Shelton**

**10:00 – 10:30 – Lewis, Mangum**

**\*\*Tuesday, May 25<sup>th</sup>:** Last Day of School! (Early Release Day)

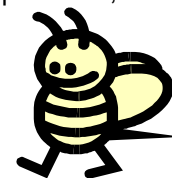
**\*\*It is important to send a water bottle with your child daily.**

**\*\*Please remember students are ONLY allowed to keep water in their water bottles while at school.**

**\*\*Also, please remember that students are to wear clothes that are appropriate for school. Please be mindful of holes in pants, length of shorts, and shoes must have backs.**

**\*\*Students are required to wear a mask to enter the bus and the school, as well as throughout the day.**

Prepared, Respectful, Involved,  
Dependable, Excellent



**Pearl Upper Elementary**  
"Keep Calm and Stay the Course"